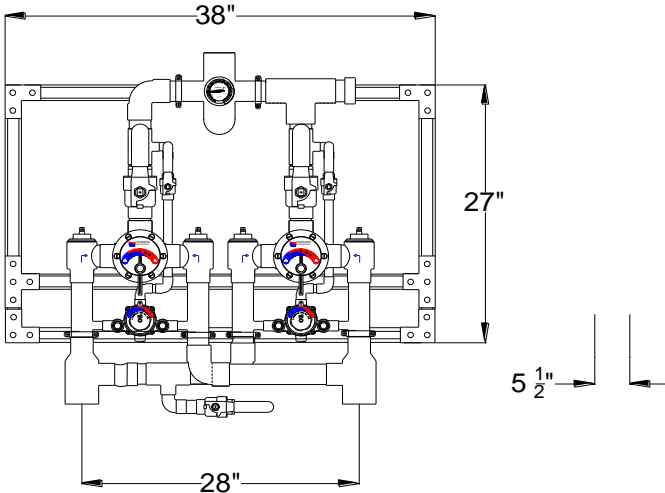


HIGH LOW MANIFOLD SYSTEM

TM-2020B-2PS-LF _____ PARALLEL INSTALLATION WITH STRUT

ECO-MIX™



See page #2 for piping diagram

- Large Type TM Thermostatic water mixing valve, adjustable high temperature limit stop*, inlet checkstops, wall support, outlet ball valve
- Small Type TM Thermostatic water mixing valve, adjustable high temperature limit stop*, integral checkstops, outlet ball valve
- Maximum operating pressure: 125 PSI (860 KPA)
- 3" inlets, 3" outlet (76mm X 76mm)
- Outlet dial thermometer
- Locking temperature regulators
- 2 GPM (7.6 l/min) minimum flow capacity
- Inlet/Outlet manifold piping
- Mounted on galvanized strut
- Factory assembled and tested

This product is certified to meet Low Lead requirements of wetted surface area containing less than 0.25% lead by weight

Valve assembly is ASSE 1017 Certified



Valve assemblies are CSA B125.3-12 Certified



OPTIONS

- ___ SUFFIX TC- Test connection
- ___ SUFFIX IT- Inlet thermometers
- ___ IBV200-2PS -Inlet ball valves on all hot & cold inlets

Note: Leonard Valve Company reserves the right of product, or design modifications without notice or obligation.

***NOTE:** A limit stop, set for 120°F (49°C), is simply a mechanical setting to prevent excessive handle rotation. If incoming water is hotter than 150°F (65.5°C), the temperature of the factory test, the valve when turned to full HOT may deliver water in excess of 120°F and the limit stop **MUST BE RESET BY THE INSTALLER**

+NOTE: The valve will maintain temperature with 0.5GPM flow from the domestic hot water loop when properly installed near the hot water source with a continuously operating recirculation pump.

NOTE: Flowrates will vary depending on existing field conditions. Leonard Valve Company always recommends using CASPAK® sizing software for proper valve sizing and model number applications.

CAUTION! All thermostatic water mixing valves have limitations. They will NOT provide the desired accuracy outside of their flow capacity range. Consult the Flow Capacity Chart and DO NOT OVERSIZE. Minimum flow must be no less than as indicated.

Engineer's Approval

Job # _____
Arch/Eng. _____
Contractor _____

Note: The models shown represent Leonard Products which are believed to be equivalent in type and function to items specified. Leonard Valve Company is not responsible for errors or omissions due to differences in interpretations of information provided.



WARNING: This product can expose you to chemicals including lead, which is known to the State of California to cause cancer. For more information, go to www.P65Warnings.Ca.gov

REVIT 3D drawings available on www.bimobject.com



Made in the USA with domestic and imported parts

Product is non-cancellable and non-returnable from date from order with factory. Signed submittal required with purchase order.



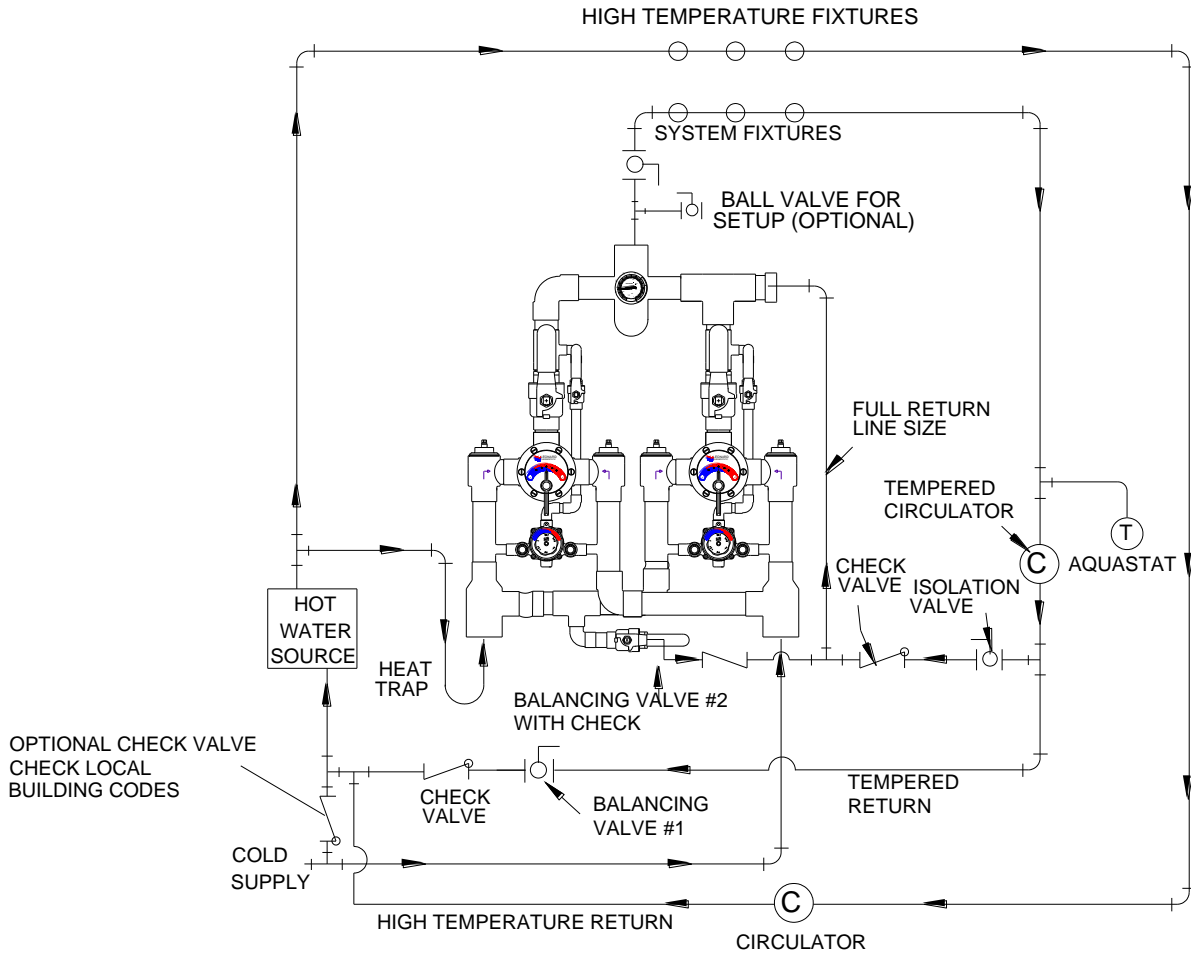
1360 Elmwood Avenue, Cranston, RI 02910 USA
Phone: 401.461.1200 Fax: 401.941.5310
Email: info@leonardvalve.com
Web Site: <http://www.leonardvalve.com>

DOUBLE FLOWRATE WHEN BOTH VALVES ARE OPERATING

SINGLE VALVE ASSEMBLY FLOWRATES SHOWN
(MINIMUM FLOW RATE HAS BEEN DOUBLED TO 2 GPM)

MINIMUM FLOW (GPM) (l/min)	SYSTEM PRESSURE DROP (PSIG)										
	5	10	15	20	25	30	35	40	45	50	PSI
	.3	.7	.97	1.4	1.7	2.1	2.4	2.8	3.1	3.4	BAR
2.0	78	113	129	145	163	172	188	197	214	226	GPM
7.6	295	428	488	549	617	651	712	746	810	856	l/min

REQUIRED PIPING METHOD #5



1360 Elmwood Avenue, Cranston, RI 02910 USA

Phone: 401.461.1200 Fax: 401.941.5310

Email: info@leonardvalve.com

Web Site: <http://www.leonardvalve.com>