

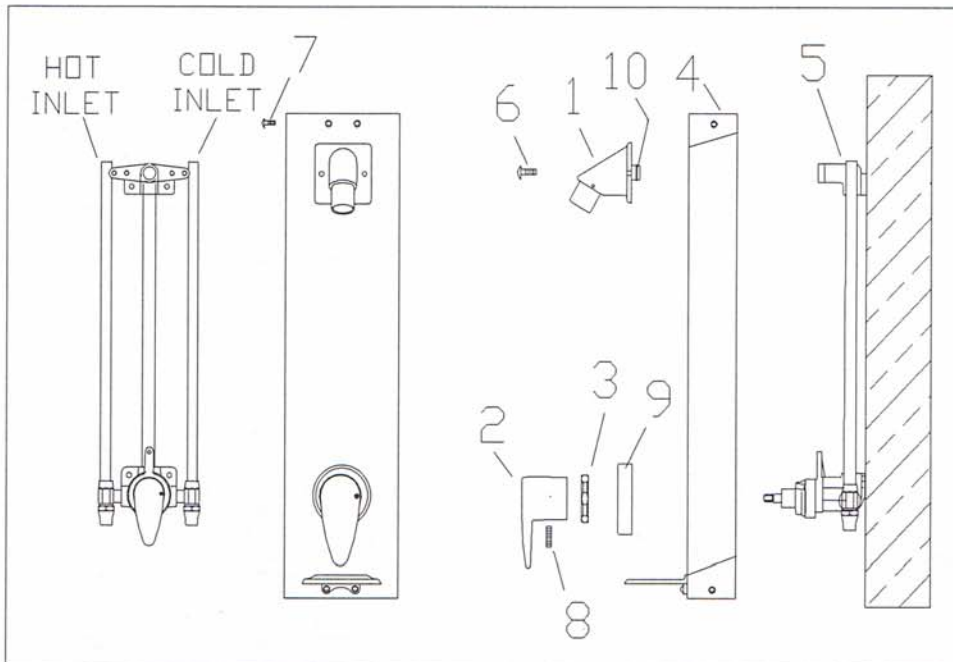
SS-PAM surfashower®

PRESSURE ACTUATED MIXER

Serial No. PAS 7630 and higher

½" top inlets

INSTALLATION INSTRUCTIONS



1. Remove item (6), 2- #1/4-20 X 3/4" long allen screws from showerhead, and remove.
2. Loosen pointer screw, (8) remove pointer (2), surfashower flange nut (3), surfashower flange (9).
3. Remove stainless steel cover (4).
4. Mount valve and piping assemble (5) directly to wall at desired height, using the integrally cast mounting fittings. See page 2 for drilling dimensions.
5. The inlets are clearly marked on mixing valve. Connect hot water to the inlet marked "H" and the cold water to the inlet marked "C". Use solder flux sparingly. After connections are made, flush pipes thoroughly to remove dirt and excess materials.
6. Replace cover, and reassemble in reverse order.
 - a. Note: when re-installing be sure not to cut o'ring (10) (TM-25-6B), when installing into showerhead bracket.
7. Screws for end caps (7) are #10-24 X 3/8" long allen screws.

REMEMBER!! THIS IS A CONTROL DEVICE WHICH MUST BE CLEANED AND MAINTAINED ON A REGULAR BASIS, (SEE MAINTENANCE GUIDE AND RECORD MGR-1000).

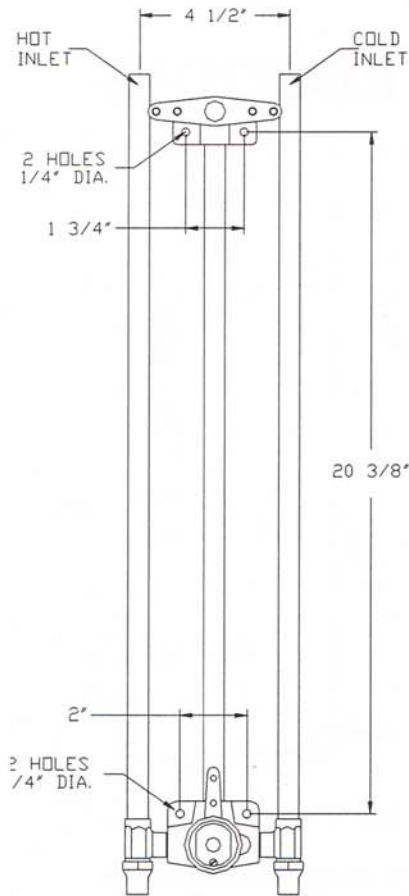
1360 Elmwood Avenue, Cranston, RI 02910 USA

Phone: 401.461.1200 Fax: 401.941.5310

Email: info@leonardvalve.com

Web Site: <http://www.leonardvalve.com>

Standard Unit Mounting Dimensions



1. Unit furnished with inlet stops on each supply.
2. Solder flux must be used sparingly. After connections are made to the valve, flush pipes thoroughly to remove dirt and excess materials, which might become lodged on the working parts of the valve.

OPERATION

The PAM-II a pressure-actuated water, mixing valve which will compensate for changes in the pressure of hot and cold supplies. The easy to read dial with directional indicators help to eliminate confusion as to where the handle should be located for a particular temperature. Turn the handle counter-clockwise from the "OFF" position through the BLUE (or COLD) area on the dial plate, the shower is on and temperature is cold. As the handle enters the RED (or HOT) area, shower temperature becomes progressively WARMER until the high temperature limit is reached in the full "HOT" position. To turn OFF, move handle back in clockwise direction to the "OFF" position.



WARNING



WARNING! THIS MIXING VALVE IS EQUIPPED WITH AN ADJUSTABLE HIGH TEMPERATURE LIMIT STOP FACTORY SET AT APPROXIMATELY 110°F (43°) WITH AN INCOMING WATER SUPPLY TEMPERATURE OF 135°F (57°C). IF INCOMING HOT WATER ON THE JOB IS HIGHER THAN 135°F, THE VALVE WHEN TURNED TO FULL HOT MAY DELIVER WATER IN EXCESS OF 110°F, AND THE HIGH TEMPERATURE LIMIT STOP MUST BE RESET BY THE INSTALLER. (SEE REVERSE)

HOT WATER IN EXCESS OF 110°F IS DANGEROUS AND MAY CAUSE SCAULDING!!

SERVICING INSTRUCTIONS

	SYMPTOM	KIT REQUIRED	PARTS INCLUDED
PACKINGS & O'RINGS	<ol style="list-style-type: none"> 1. Leak at handle. 2. Valve will not shut off completely 3. Valve is difficult to pull apart 4. Leak at back of showerhead 	Kit 1/ST(See Dwg's 2&4)	PV-2, PV-4B, PV-8-1, LVC-16B, 01358
CONTROL ROD GROUP	<ol style="list-style-type: none"> 5. Valve delivers either all hot or all cold water, or will not mix consistently. 	Kit R/ST (See Dwg.4)	TM-25-6B O-RING
INSERTED SEAT	<ol style="list-style-type: none"> 6. After replacing packings and o'rings, valve will not shut off completely 		01358, PV-CR (clean per instructions above or replace) PV-3, PV-3A, PV-16
CHECKSTOPS	<ol style="list-style-type: none"> 7. Supplies cannot be shut off completely 8. Leak at bonnet or stem 		PV-3, PV-3A, PV-16, (also PV-45 if 1/4" hex tool not available). Dwg. 5 on page 3

INSTRUCTIONS FOR CLEANING AND SERVICING

TO CLEAN PAM-II AFTER OPERATION

- Loosen (06910) pointer set screw, remove pointer (06105) flange nut (23139) and flange (23136) (see DWG 1).
- Turn off hot and cold supplies.
- Temporarily place pointer on spline and turn LEFT to maximum "HOT" position. Unscrew cover and remove complete interior assembly (See Dwg. 3).
- If valve will not shut off, replace pv-8-1 upper packing, PV-2 lower packing and inspect upper and lower valve seats in PV-3 sleeve (SEE Dwg. 4).
- If valve will not mix properly, piston in PV-CR control rod group may be sticking due to foreign matter (See Dwg. 4).
 - Tap knurled end of control rod against a solid object to free piston or...
 - Remove PV-2 lower packing and screw and tap piston loose with a small drift pin.
 - Submerge lower end of PV-CR in a non-corrosive cleaning solution and flush with clean water.

NOTE: Before reinserting assembly in valve (with cover gasket) make sure pointer has been turned LEFT to the maximum "HOT" position.

NOTE: WHEN ORDERING ANY PART, PROVIDE SERIAL NUMBER STAMPED ON DIAL PLATE (SEE DWG. 1).

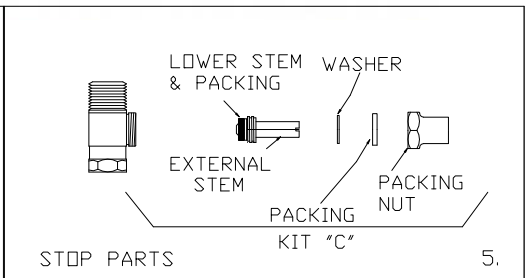
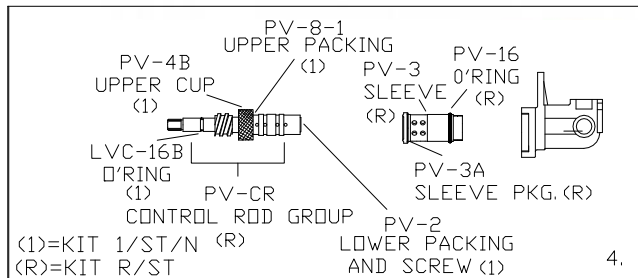
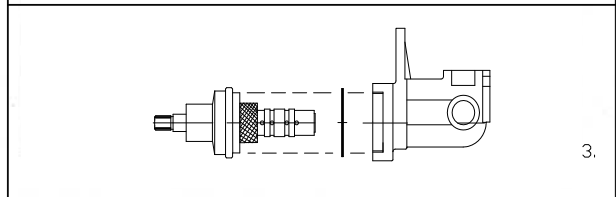
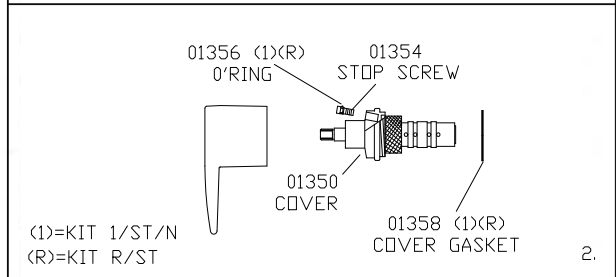
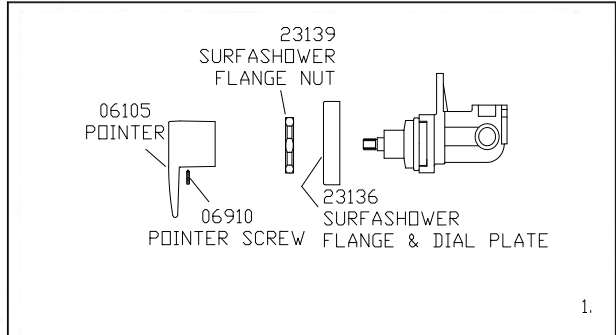
WARNING

WARNING! THIS MIXING VALVE IS EQUIPPED WITH AN ADJUSTABLE HIGH TEMPERATURE LIMIT STOP FACTORY SET AT APPROXIMATELY 110°F (43°) WITH AN INCOMING WATER SUPPLY TEMPERATURE OF 135°F (57°C). IF INCOMING HOT WATER ON THE JOB IS HIGHER THAN 135°F, THE VALVE WHEN TURNED TO FULL HOT MAY DELIVER WATER IN EXCESS OF 110°F, AND THE HIGH TEMPERATURE LIMIT STOP MUST BE RESET BY THE INSTALLER.

TO RESET HIGH TEMPERATURE LIMIT STOP (DWG 2):

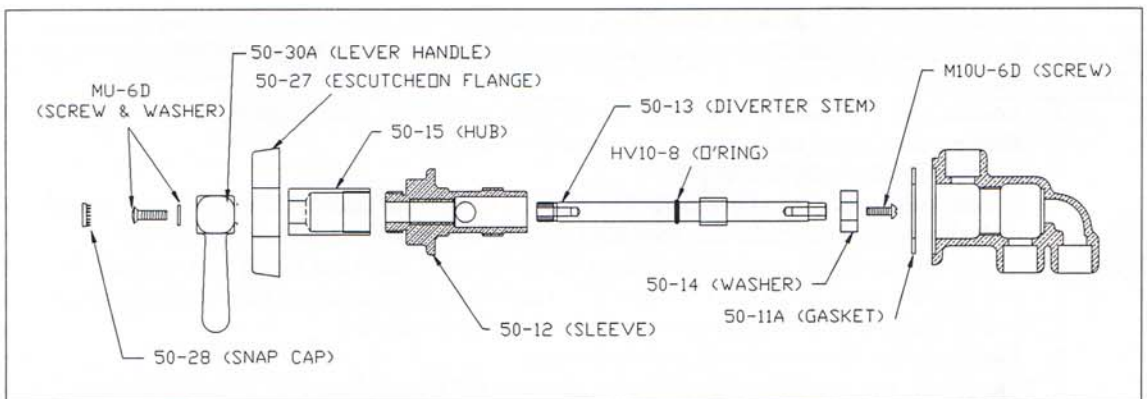
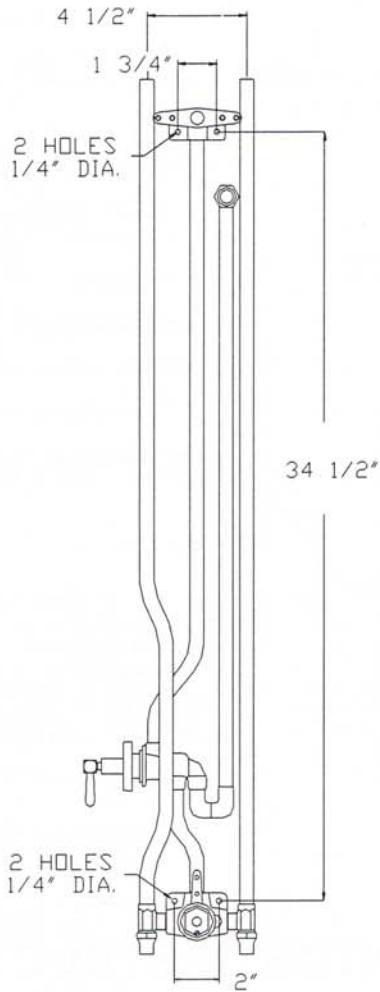
- Remove pointer (06105). Loosen 01354 Stop Screw but do NOT remove.
- Replace pointer on spline and turn to the left or right until the valve is delivering the highest temperature OF 110°F OR LOWER, then remove pointer.
- Tighten 01354 Stop Screw. On the cover.
- Reinstall pointer so that it's pointing to the extreme HOT position.

IMPORTANT! TEST THE NEW HIGH TEMPERATURE SETTING BY HOLDING A THERMOMETER UNDER THE FLOW OF WATER TO BE CERTAIN IT IS AS DESIRED. HOT WATER IN EXCESS OF 110°F IS DANGEROUS AND MAY CAUSE SCALDING.



REMEMBER!!! THIS IS A CONTROL DEVICE WHICH MUST BE CLEANED AND MAINTAINED ON A REGULAR BASIS, (SEE MAINTENANCE GUIDE AND RECORD MGR-1000)

Handicapped Unit Mounting Dimensions



1360 Elmwood Avenue, Cranston, RI 02910 USA

Phone: 401.461.1200 Fax: 401.941.5310

Email: info@leonardvalve.com

Web Site: <http://www.leonardvalve.com>