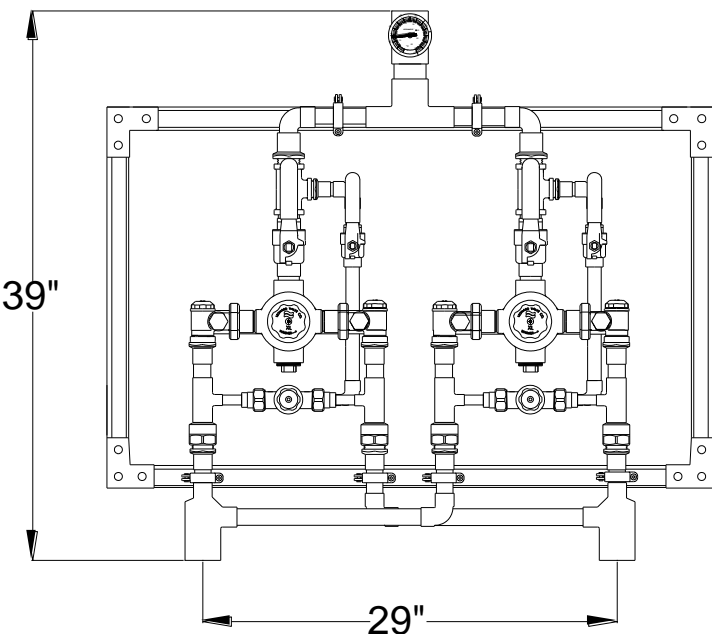


# HIGH LOW THERMOSTATIC MIXING VALVES

## ECO-MIX™

### XL-690-2PS-LF \_\_\_\_\_ PARALLEL INSTALLATION WITH STRUT



- 2" inlets, 2" outlet (51mm x 51 mm)
- Dial Thermometer on outlet
- Integral combination checkstops with strainers and wall support
- 125 PSI (8.6 BAR) maximum operating pressure
- Copper encapsulated thermostatic element assemblies with Stainless steel shuttle
- Temperature adjustment range, 90-140°F (32-60°C)\*\*
- Outlet dial thermometer
- Internal parts of bronze, brass, and stainless steel
- Rough bronze finish



**WARNING:** This product can expose you to chemicals including lead, which is known to the State of California to cause cancer. For more information, go to [www.P65Warnings.Ca.gov](http://www.P65Warnings.Ca.gov)

**VALVE ASSEMBLIES ARE ASSE 1017 Certified**  
**VALVE ASSEMBLIES ARE ASSE 1069 Certified**



#### OPTIONS

\_\_\_ SUFFIX **IT** Inlet thermometers

\_\_\_ SUFFIX **TC** Test connection

NOTE: Leonard Valve Company reserves the right of product or design modification without notice or obligation

**Product is non-cancellable and non-returnable from date from order with factory. Signed submittal required with purchase order.**

**This product is certified to meet Low Lead requirements of wetted surface area containing less than 0.25% lead by weight**

### MODEL XL690-2PS-LF Flow Capacity

DOUBLE FLOWRATE WHEN BOTH VALVES ARE OPERATING  
SINGLE VALVE ASSEMBLY FLOWRATES SHOWN  
(MINIMUM FLOW RATE HAS BEEN DOUBLED TO 2 GPM)

MIN FLOW	PRESSURE DROP												PSI
	5	10	15	20	25	30	35	40	45	50	55	60	
	0.3	0.7	1	1.4	1.7	2.1	2.4	2.8	3.1	3.4	3.8	4.1	BAR
2	5	10	20	35	39	41	48	55	59	62	64	65	GPM
7.6	19	38	76	132	148	155	182	208	223	235	242	246	l/min

**\*\*NOTE:** For temperatures outside of this valve's stated range, please see our line of bi-metal valves.

**\*NOTE:** A locking temperature regulator set for 120°F (49°C), is simply a mechanical setting to prevent unauthorized temperature set point changes. If incoming water is hotter than 150°F (65.5°C), the temperature of the factory test, the valve may deliver in excess of 120°F. **MUST BE RESET BY THE INSTALLER**

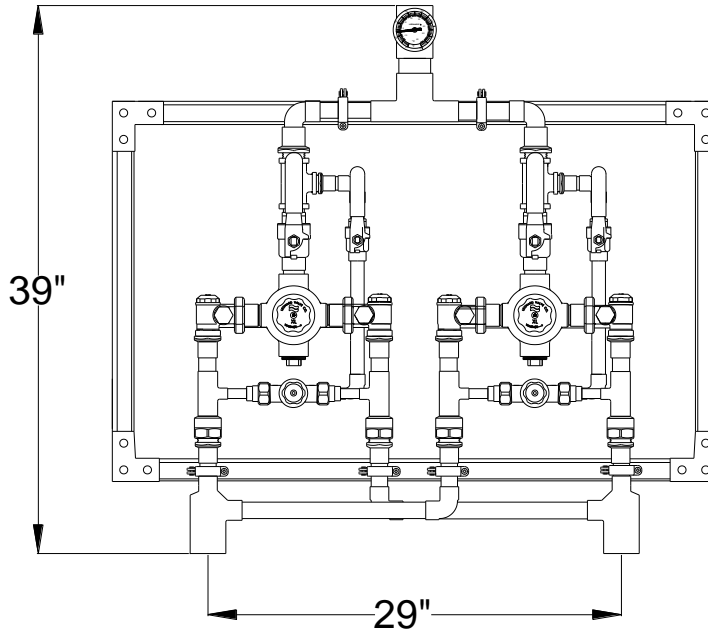
**Engineer's Approval**

Job # \_\_\_\_\_

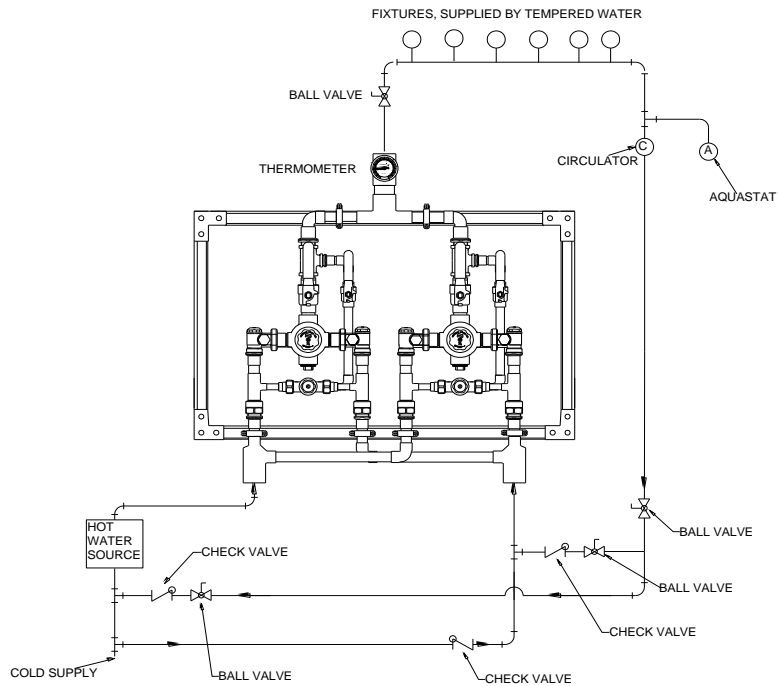
Arch/Eng. \_\_\_\_\_

Contractor \_\_\_\_\_

Note: The model shown represents Leonard Products which are believed to be equivalent in type and function to items specified. Leonard Valve Company is not responsible for errors or omissions due to differences in interpretations of information provided.



**REQUIRED PIPING METHOD W**



**CAUTION!** All thermostatic water mixing valves have limitations. They will NOT provide the desired accuracy outside of their flow capacity range. Consult the Flow Capacity Chart and DO NOT OVERSIZE. Minimum flow must be no less than as indicated.



1360 Elmwood Avenue, Cranston, RI 02910 USA

Phone: 401.461.1200 Fax: 401.941.5310

Email: [info@leonardvalve.com](mailto:info@leonardvalve.com)

Web Site: <http://www.leonardvalve.com>