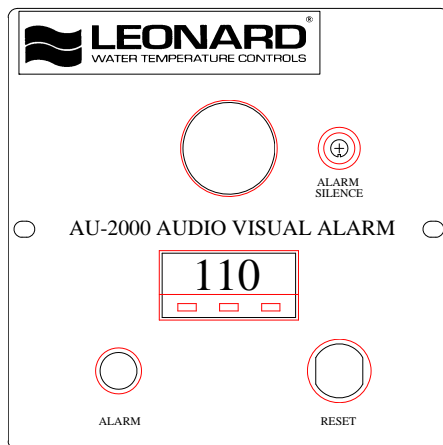


INSTALLATION ADJUSTMENT SERVICE AU2000-AUDIO VISUAL ALARM UNIT

IMPORTANT! Provide serial number located on front of cover plate

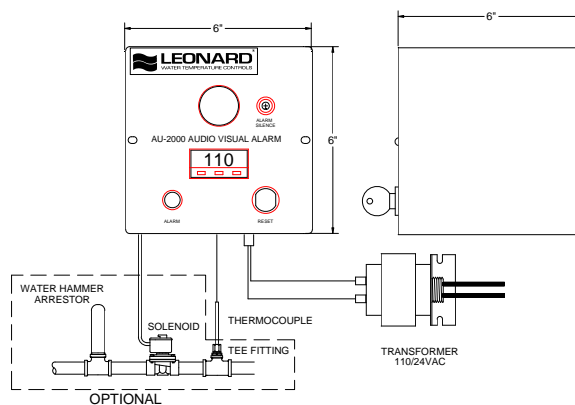
Note: Must use 20 gauge J type thermocouple wire. Leads to terminals should be well separated from both supply and load lead wires. Long runs should be twisted and shielded or contained in separate metal conduit. Runs are limited to 100' maximum.



INSTALLATION

All electrical and plumbing connections should be made by a qualified technician

1. Install 110 primary 24 secondary transformer (shipped loose) in a suitable location and connect line voltage.
2. Connect low voltage from transformer to terminal connections (see wiring diagram).
3. Install thermocouple (shipped loose) within piping. Optional tee fitting is sold separately.
4. Connect 20 gauge J type thermocouple wire leads to terminals (see wiring diagram). Wire should be well separated from both supply and load lead wires. Long runs should be twisted and shielded or contained in metal conduit. Runs are limited to 100' maximum.
5. Install 24 V AC normally closed solenoid valve. (sold separately).
6. Connect solenoid leads to terminals (see wiring diagram).
7. Install water hammer arrestor, (sold separately).
8. See Quick Programming Instructions.



1360 Elmwood Avenue, Cranston, RI 02910 USA

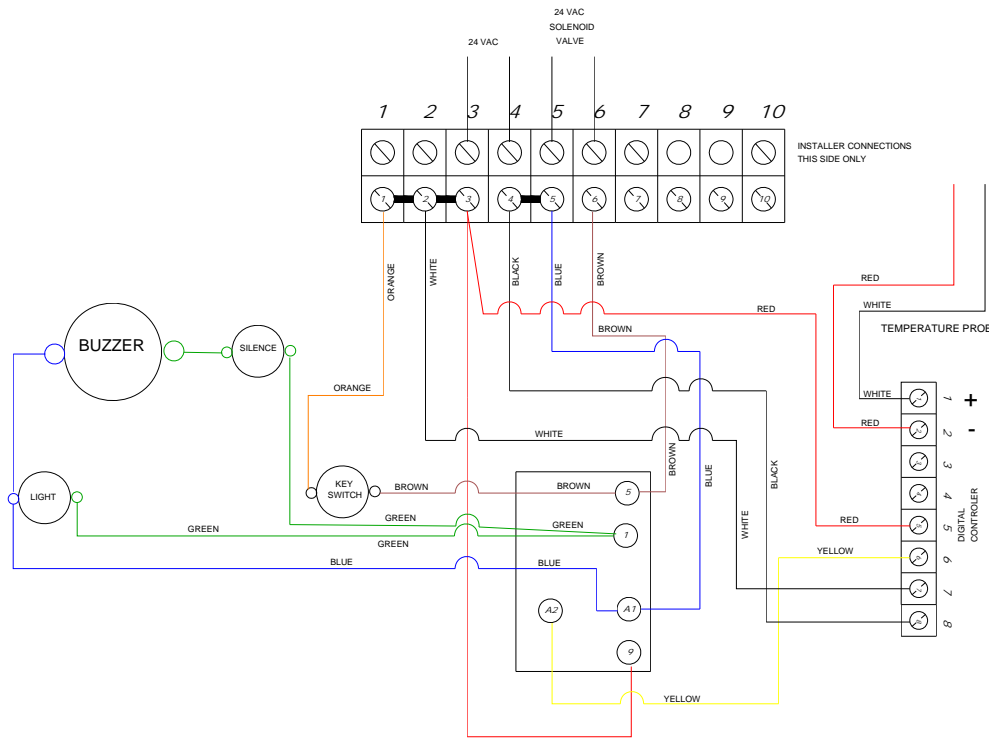
Phone: 401.461.1200 Fax: 401.941.5310

Email: info@leonardvalve.com

Web Site: <http://www.leonardvalve.com>

WIRING DIAGRAM

Note: Must use 20 gauge J type thermocouple wire. Leads to terminals should be well separated from both supply and load lead wires. Long runs should be twisted and shielded or contained in separate metal conduit. Runs are limited to 100' maximum. CONNECT WIRES FROM THERMOCOUPLE DIRECTLY INTO CONTROLLER CONNECTIONS 1 & 2



QUICK PROGRAMMING INSTRUCTIONS

When power is applied to the AU2000 it has been factory programmed to display the sensed temperature in degrees Fahrenheit and will have a 110 degree Fahrenheit Alarm Temperature Set Point.

TO CHANGE TEMPERATURE SET POINT

1. Hold down button on left, while button is depressed the middle button will lower temperature set point.
2. To raise the set point, hold down button on left, while button is depressed the button on the right will raise the set point.

***WARNING**

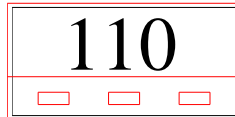
HOT WATER IN EXCESS OF 110°F (43°C) IS DANGEROUS AND MAY CAUSE SCALDING

OPERATION

1. The unit will monitor and display temperature. It will allow water to flow by energizing the solenoid valve. A LED located at the top-left on the most significant digit of the display is on whenever the temperature is above the Alarm Temperature Set Point.
2. Should the temperature exceed the Alarm Temperature Set Point the LED will turn on, an audible alarm will sound, and the red alarm light on the panel will turn on. The solenoid valve will also be de-energized stopping flow.
3. The alarm will continue to sound until the temperature has been lowered to below the Alarm Temperature Set Point. The solenoid valve will continue to be de-energized stopping flow.
4. The alarm silence button will only deactivate the audible sound while being depressed. The solenoid valve will continue to be de-energized stopping flow.
5. Using the Reset Key, the solenoid valve can be energized to allow water to flow for adjusting the water temperature below the Alarm Temperature Set Point. **THE OVERRIDE POSITION WILL ALLOW WATER TO FLOW THAT EXCEEDS THE SET POINT. ALL USERS SHOULD BE REMOVED FROM THE WATER FLOW BEFORE OVERRIDE IS INITATED.** The reset key cannot be removed while in the override position to prevent leaving the unit operating in override.
6. Unit will automatically reset after temperature drops below the Alarm Temperature Set Point.

TO CHANGE TEMPERATURE SET POINT

1. Hold down button on left, while button is depressed the middle button will lower temperature set point.
2. To raise the set point, hold down button on left, while button is depressed the button on the right will raise the set point.



TROUBLESHOOTING GUIDE

1. Temperature not reading correct.

- a. Check thermocouple wires + & - are on the correct terminal connection on the back of the digital controller.
- b. Not using the correct gauge wire or runs longer than 100' maximum.
- c. If still not reading correctly please contact factory for bulletin # AU-OFFSET to manually offset readout.

LIMITED WARRANTY

Leonard Valve Company (hereinafter, "Leonard") warrants the original purchaser that products manufactured by Leonard will be free from defects in material or workmanship under normal conditions of use, when properly installed and maintained in accordance with Leonard's instructions, for a period of one year from the date of shipment. During this period, Leonard will at its option repair or replace any product, or part thereof, which shall be returned, freight prepaid, to the Leonard factory and determined by Leonard to be defective in materials or workmanship. Leonard provides no warranty, express or implied, which extends beyond the description contained herein. LEONARD SPECIFICALLY DISCLAIMS ANY AND ALL IMPLIED WARRANTIES OF MERCHANTABILITY OR OF FITNESS FOR A PARTICULAR PURPOSE. Nonetheless, some jurisdictions may not allow the disclaimer of certain implied warranties, in which case Leonard hereby limits such implied warranties to the duration of the limited warranty period contained herein. Some jurisdictions may not allow limitations on how long an implied warranty lasts, so the foregoing durational limitation may not apply to you. In no event will Leonard be liable for labor or incidental or consequential damages. Any alteration or improper installation or use of this product will void this limited warranty. If any provision of this limited warranty is prohibited by law in the applicable jurisdiction, such provision shall be null and void, but the remainder of this limited warranty shall continue in full force and effect.

1360 Elmwood Avenue, Cranston, RI 02910 USA

Phone: 401.461.1200 Fax: 401.941.5310

Email: info@leonardvalve.com

Web Site: <http://www.leonardvalve.com>